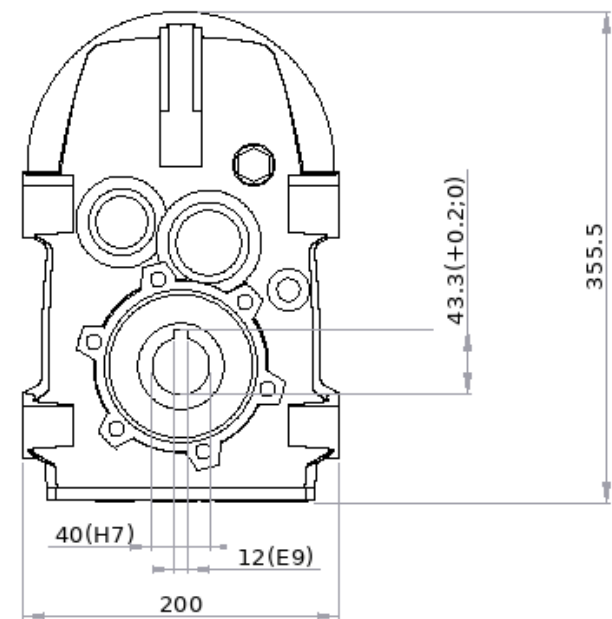
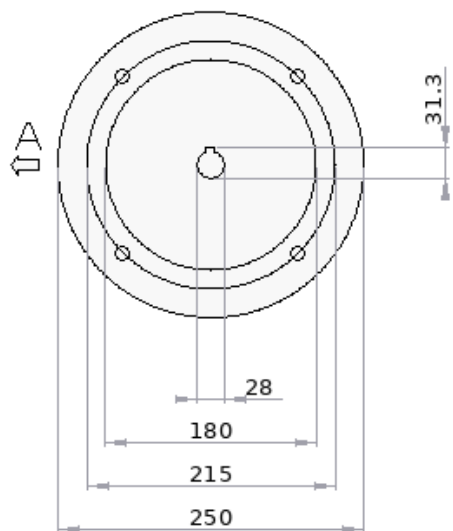



Input flange, view from A



Warning: out of scale drawing - It may not exactly represent the product. The exact dimensions can be drawn from the 2D drawing or the 3D model to download.

|  |  |   |
|--|--|---|
| STON 5   DELPHI 100LB-4  |  |                              |
| Date: 14/01/2026 13:29   |  |   |
| <a href="http://www.motive.it/configuratore.php">www.motive.it/configuratore.php</a> |  |   |
| Scale: Out   |  | Motive s.r.l.<br>Via Le Ghiselle, 20<br>25014 Castenedolo(BS) Italy<br>Tel. +39 030 2677087<br>Web: www.motive.it |
| This drawing is property of MOTIVE s.r.l.  |  |   |



Motive s.r.l.  
 Via Le Ghiselle, 20  
 25014 Castenedolo (BS), Italy  
 Tel: +39 030 2677087  
 Fax: +39 030 2677125  
 motive@motive.it  
 www.motive.it

# DATA-SHEET

## PRODUCT DESCRIPTION



### Gearbox

|  |                            |
|--|----------------------------|
| Gearbox type                             | STON 5                     |
| Gearbox code                             | <a href="#">ST53034125</a> |
| Rated Red. Ratio                         | 34                         |
| Real Red. Ratio                          | 33.89                      |
| Stages #                                 | 3                          |
| Values calculated for motor at Hz        | 50                         |
| Output speed rpm                         | 42                         |
| Output torque Nm                         | 644.00                     |
| Rated service factor at Nm 644.00        | 1.28                       |
| Mounting position: B3                    |                            |
| Moment of inertia kgm <sup>2</sup>       | 0.000864                   |
| Backlash                                 | 0.33°                      |
| Max axial/radial load on output shaft kg | 758(Fr=0) / 394(Fa=0)      |

### Motor features (motor not supplied)

|              |              |
|--------------|--------------|
| Motor type   | DELPHI 100LB |
| Poles        | 4            |
| Power kW     | 3            |
| Frequency Hz | 50           |
| Voltage      | 230/400V     |

Total weight kg 28.5

