



SITI S.p.A. - Società Italiana Trasmissioni Industriali

Via G.Di Vittorio, 4 - 40053 - Valsamoggia Loc. Monteveglio (BO) – ITALY

Tel.+390516714811 - Fax.+390516714858

www.sitiriduttori.it - Email: info@sitiriduttori.it

2023-05-17#10706

GEAR UNIT CAD CONFIGURATION

TECHNICAL DATA

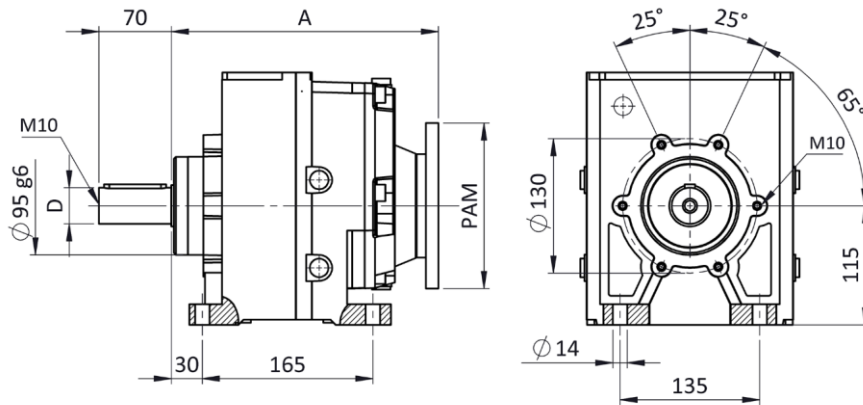
TYPE	MNHL	RATIO	17,23
SIZE	35	FREQUENCY [Hz]	50Hz
STAGE	2	INPUT SPEED [rpm]	1400
RATIO	17,23	OUTPUT SPEED [rpm]	81,3
PAM	PAM100B5 (28/250)	INPUT POWER [kW]	3
OUTPUT SHAFT	D35	OUTPUT TORQUE [Nm]	342
TYPE FLANGE	NO SELECT	EFFICIENCY	0,97
MOUNTING POSITION	B3	SERVICE FACTOR	1,27

ACCESSORIES

OPTIONAL

MOUNTED ELECTRIC MOTOR | NO

ATEX | NO
LUBRICANT | OIL ISO VG 220



A=256 | PAM28/250
OUTPUT SHAFT: D35

MOUNTING POSITION

B3	B6	B7	B8	V5	V6
✓					

Warning: schematic drawing not in scale - The geometry may not reflect the product accurately